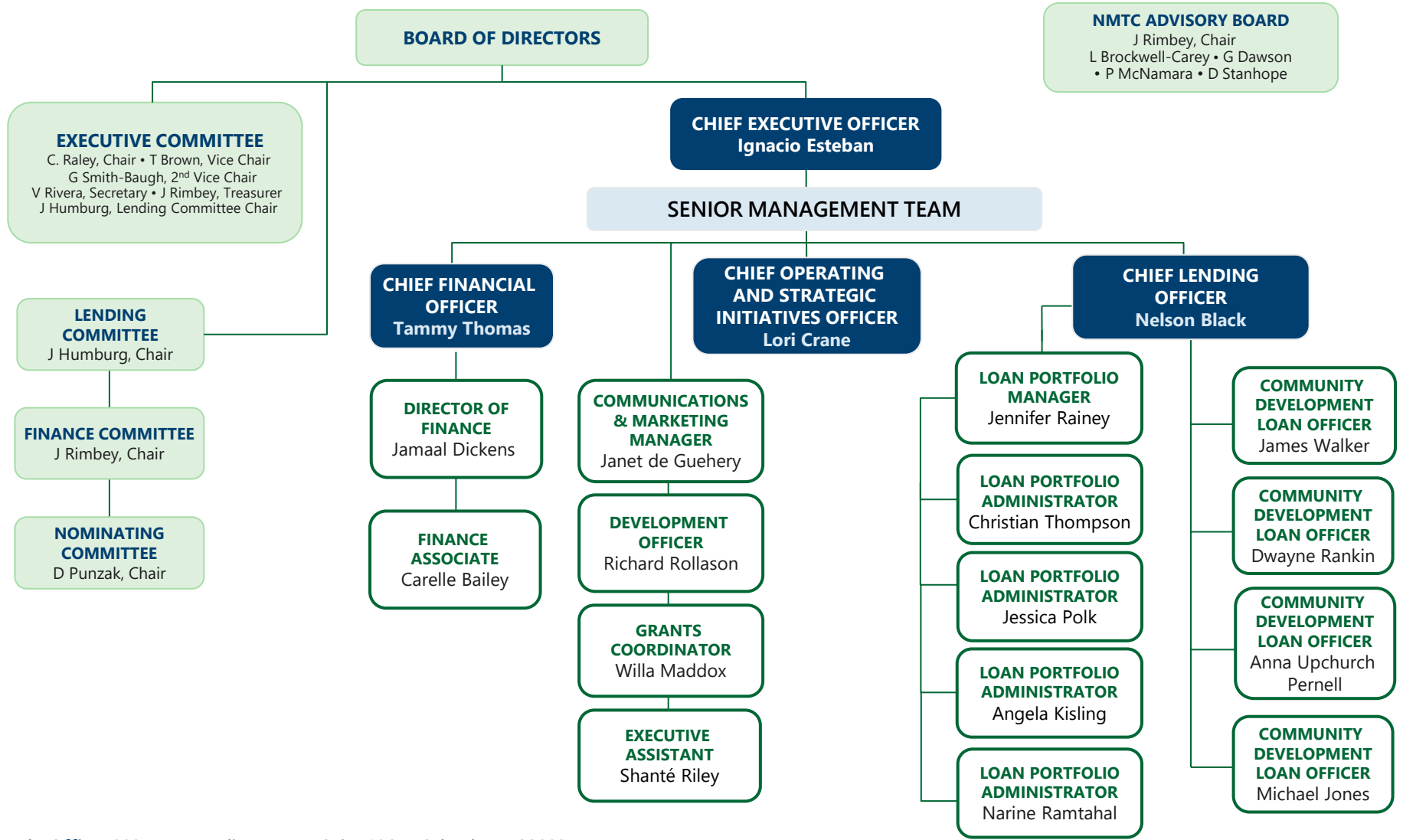


# Organizational Chart



**NMTC ADVISORY BOARD**  
 J Rimbey, Chair  
 L Brockwell-Carey • G Dawson  
 • P McNamara • D Stanhope

**Main Office:** 800 N. Magnolia Avenue, Suite 106 ■ Orlando, FL 32803  
 407.246.0846 ■ f: 407.246.0856 ■ [www.fclf.org](http://www.fclf.org)  
 Orlando ■ Tampa ■ Fort Lauderdale